

Active®
Sports Vinyl



Special Features



Applications

- Basketball
- Pilates & Yoga
- Gymnastics
- Badminton
- Kickboxing
- Futbol / Futsal
- Wrestling
- Martial Arts
- Volley ball

Product Description

Active® is a multi layered vinyl sports floor covering, available in sheets 1.5m wide with a compact closed cell foam backing, glass fibre reinforcement, vinyl performance layer, embossed PVC wear layer, and printed wood design protected by a transparent wood grain embossed wear layer. It has superior dimensional stability and enhanced indentation ratings. Rapid restoration of the foam layers gives the following extremely good sports performances.

With an elevated underfoot comfort, it is the ideal solution for professional sports, multi-purpose halls, gymnasiums, kindergartens and other applications where athletic performance, safety, energy absorption, noise reduction, design and durability are required.



Power Up the Game

When the challenge is on, you need the best flooring to perform. No matter what the activity, Responsive's ACTIVE® sports flooring will meet up to the needs and expectations, day after day, whilst ensuring the least damage to your body.



BRIGHT ORANGE

AVE - 05



IRISH GREEN

AVE - 04



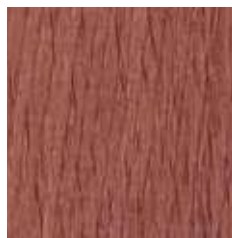
GOLDEN BLONDE

AVE - 08



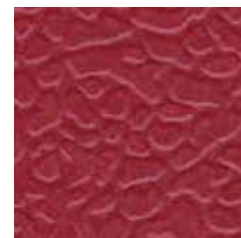
HAZEL WOOD

AVE - 09



WHEAT BROWN

AVE - 10



RUBY RED

AVE - 06



IRON GREY

AVE - 01



DOLPHIN GREY

AVE - 07



AIRFORCE BLUE

AVE - 02



PRESIDENTIAL BLUE

AVE - 03

Active® Sports Vinyl



Sports Flooring	Characteristics	Standards	Units	Active®
VOC	Indoor Air Quality	CA Section 01350 ($\leq 0.5 \text{ mg} / \text{m}^3$)	Floorscore Certified (SCS - FS - 04547)	Yes
Product Classification	PVC Sports Flooring	EN 651	Class	23 : Domestic Heavy 31 : Com. Moderate
Special Treatment			Resistant to Stains	PUR (Polyurethane treatment)
Description	Thickness	EN 428	mm	4.50
	Weight	EN 430	g/m ²	Solid Colours: 3000 ± 100 Wood Colours: 3350 ± 100
	Width	EN 426	mtrs	1.80
	Standard roll length	EN 426	m	20
Classification	Impact sound insulation	EN ISO 717-2 EN ISO 140-8	$\Delta Lw = \text{dB}$	20 - 22
	Flammability	EN 13501-1	Class	Cfl - S1
Sports Properties	Rotational friction	EN 13036-4		80 - 110
	Impact Resistance	EN 1517	N.m	≥ 8 No Deformation
	Shock absorption	DIN 18032	%	22 - 24
		EN 14808	%	16 - 20
	Vertical deformation	EN 14809	mm	≤ 2
	Ball rebound	EN 12235	%	95 - 97
	Specular gloss	EN 2813		≤ 30
Technical Characteristics	Dimensional stability	EN 434	%	+/- 0.40
	Indentation Resistance	EN 1516	mm	≤ 0.5
	Resistance to rolling load	En 1569	1500 N	≤ 5
	Colour fastness	ISO 105-B02		6
	Abrasion resistance (H 18 wheel)	EN ISO 5470-1	$\leq 1000 \text{ mg} / 1000 \text{ cycles}$	≤ 500
	Abrasion group	EN 660-2	Group	T
	Abrasion group	EN 660-2	Group	T

