



Regor®

Stud Vinyl: Super Anti-Slip

2024



Special Features



CERTIFIED BY SCS Global Services



Applications

- Kitchen areas or wet areas in hospitals, schools, leisure centres, holiday camps and industries
- Garages and workshops
- Locker rooms
- Lift areas and entrances
- Ramp and sloped corridor access
- Delivery and preparation areas
- Construction site office
- Storage rooms

Product Description

Regor® is a slip resistant flexible vinyl floor covering available in 1.50 and 2.00 mm thicknesses, with a special R12 slip resistant embossing which confers excellent safety properties.

Regor® complies with the EN 649 norm (34 / 43) and is suitable for transport and most commercial and industrial areas. It is an adapted solution for medium traffic applications where enhanced slip resistance, durability, hygiene and easy maintenance are required.

Regor® is VOC (≤ 12 Chronic REL) and formaldehyde compliant (≤ 9.0 $\mu\text{g}/\text{m}^3$) according to the CDPH/EHLB/ Standard, Method V1.1-2010 (certificate 120316-01).

Regor®

Stud Vinyl: Super Anti-Slip

Colour Me Embossed

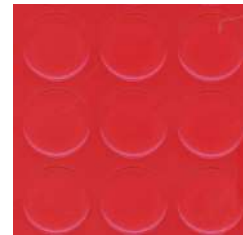
With nine different embosses in seven available colours, Regor® has many avatars. Easy to install, easy to clean and good anti-slip properties make Regor® an adaptable solution for everyday safety applications.



Hi-Viz-Yellow



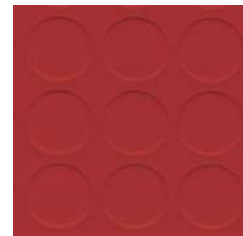
Beige



Sunrise Red



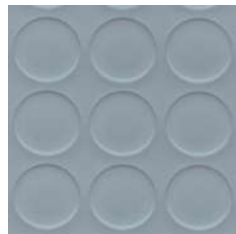
Terracotta



Deep Cherry



Silver



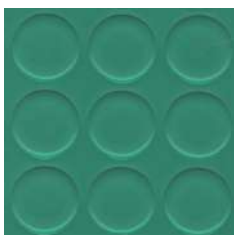
Light Grey



Dark Grey



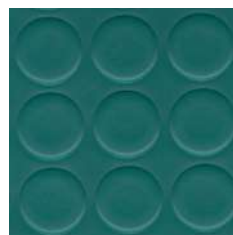
Coffee Brown



Sage Green



Lush Green



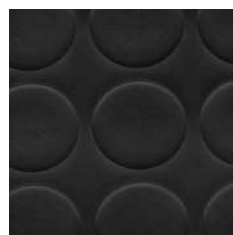
Mermaid Blue



S. Blue



Dark Blue

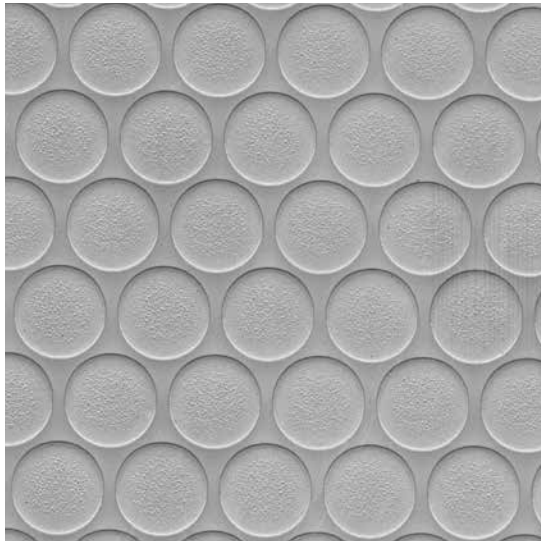


Black

Matching welding rods are available for every colour.
Printed shades may appear slightly different from actual samples.

Regor®

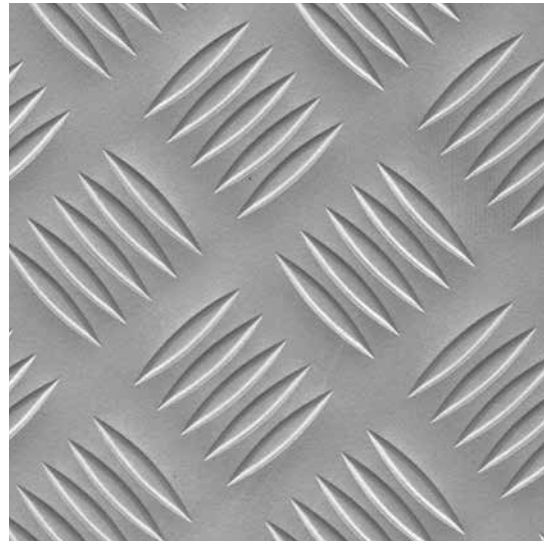
Stud Vinyl: Super Anti-Slip



Medium Button

7949-206-4

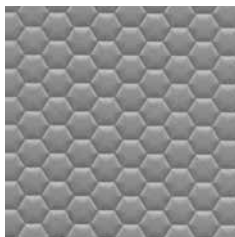
Lt. Grey



Multi Checkered

7949-205-4

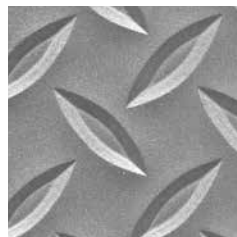
Lt. Grey



Diamond

7949-208-4

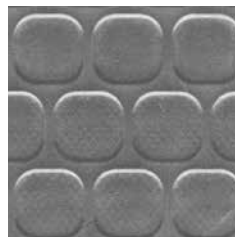
Lt. Grey



Single Checkered

7949-207-4

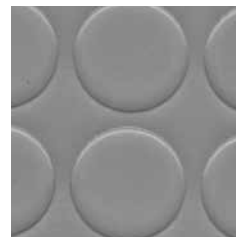
Lt. Grey



Small Square

7949-210-4

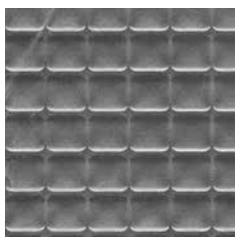
Lt. Grey



Big Button

7949-204-4

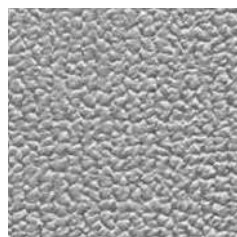
Lt. Grey



Big Diamond

7949-211-4

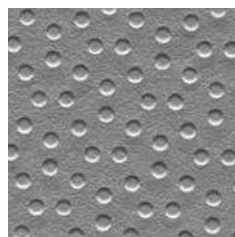
Lt. Grey



Carpet

7949-203-4

Lt. Grey



Dots

7949-209-4

Lt. Grey



Strips

7949-201-1

Lt. Grey

Matching welding rods are available for every colour.
Printed shades may appear slightly different from actual samples.

Regor®

Stud Vinyl: Super Anti-Slip

Characteristics	Standards	Units	Regor®	
Indoor Air Quality	CA Section 01350 (≤ 0.5 mg / m ³)	Floorscore Certified (SCS - FS - 04547)	Yes	
Description				
Type of floor covering	EN 13845 EN 13553	Classification	Stud Vinyl : Super Anti-Slip	
General performance	BS EN ISO 10874		34: Very Heavy Commercial 43: Heavy Light Industrial	
Usage / Wear resistance	BS EN 649	Group	P (≤ 4 mm ³)	
Special Treatment			Easy Maintenance	
Overall thickness	ISO 24346 - EN 428	mm	1.50	2.00
Weight	ISO 23997 - EN 430	g/m ²	2750	3500
Sheet size	ISO 24341 - EN 426	m (width)	2	
		m (length)	15 / 20	
		m ² (surface area)	30 / 40	
Tile Size	EN 427	cm x cm (length x width)	30 x 30 50 x 50 61 x 61	
Castor chair test	ISO 4918 - EN 425	Type of use	Continuous	
Slip resistance	DIN 51130	Ramp Test	R11	
	EN 13893 ASTM D2047	Coefficient of friction	DS (> 0.30) Pass (0.70 avg)	
Dimensional stability	ISO 23999	%	≤ 0.40	
Flexibility	ISO 24344	20mm mandrel	No cracking	
Seam Strength	ISO 16906	N/50mm	Pass	
Residual indentation	ISO 24343 - 1 - EN 433	mm	≤ 0.10	
	ASTM F970	psi	800	
Colour fastness to light	EN ISO 105 - B02	Degrees	≥ 6	
	ASTM F1515	$\Delta E \leq 800$ after 300 h (colour change)	Pass	
Static electrical propensity	EN1815	kV	< 2.0	
Thermal resistance	EN 12667	m ² k/W	Approx 0.01m ² k/W (suitable at 27°C)	
Heat Stability	ASTM 1514	$\Delta E \leq 0.80$ (colour change)	Pass	
Reaction to fire	EN ISO 9239-1	kW/m ²	≥ 8	
	EN ISO 11925-2		Pass	
	EN 13501-1 : 2007+A1	Class	Bfl - S1	
	ASTM E 648	Type	1	
Smoke density	ASTM E 662	Dm	< 450	

